



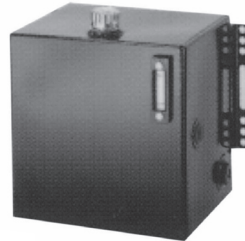
## MODELS: A-3107 & A-3100

### Steel Sidemounts - 7 Gallon & 10 Gallon

#### Model A-3107

7 Gallon Capacity

Tank Size: 12" long x 12" wide x 12" high  
Shipping Weight - 40#

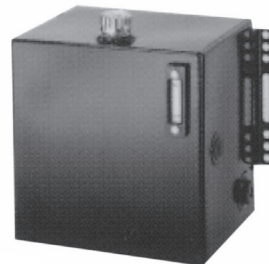


Steel tank assembly, fully baffled, with 2" x 2" x 6" mounting angles. Two 1-1/4" NPT suction ports; two 1" return line ports; magnetic drain plug; one 1-1/4" port plug and one 1" port plug. Powder coated black. Filler/breather assembly - including 40 micron filter/breather cap (chain mounted) with nylon strainer basket and bayonet closure. Oil level and temperature indicator. Unit is packaged in a single carton and shipped UPS.

#### Model A-3100

10 Gallon Capacity

Tank Size: 12" long x 14" wide x 14" high  
Tank Weight - 45#



Steel tank assembly, fully baffled, with pre-punched and slotted 2" x 2" mounting angles. Two 1-1/4" NPT suction ports; two 1" return line ports; magnetic drain plug; one 1-1/4" port plug and one 1" port plug. Powder coated black. Filler/breather assembly - including 40 micron filter/breather cap (chain mounted) with nylon strainer basket and bayonet closure. Oil level and temperature indicator. Unit is packaged in a single carton and shipped UPS.

### PARTS LISTING

Order No.	Weight	Description	Page #
ASG-105	1#	Sight/Temperature Gauge	30
AFA-330	2#	Fill Assembly	28
ABC-315	1#	Filter/Breather Cap Only	29
APP-204	1#	Steel Port Plug - 1-1/4" NPT	31
APP-210-M	1#	Magnetic Port Plug - 3/4" NPT	44
APP-210	1#	Steel Port Plug - 1" NPT	31

ALL TANKS FACTORY TESTED AND FOGGED